

**PMF1 Rabbit mAb [K2GY]**

**Cat NO. :A88727**

**Information:**

Applications	Reactivity:	UniProt ID:	MW(kDa)	Host	Isotype	Size
WB	H,M,R	Q6P1K2	23KDa	Rabbit	IgG	50ul,100ul,200ul

**Applications detail:**

Application	Dilution
WB	1:1000-2000
The optimal dilutions should be determined by the end user	

**Conjugate:**

UnConjugate

**Form:**

Liquid

**sensitivity:**

Endogenous

**Purification:**

Protein A purification

**Specificity:**

Antibody is produced by immunizing animals with a synthetic peptide of Human PMF1.

**Storage buffer and conditions:**

Antibody store in 10 mM PBS, 0.5mg/ml BSA, 50% glycerol (buffer) .

Shipped at 4°C. Store at -20°C or -80°C.

Products are valid for one natural year of receipt. Avoid repeated freeze / thaw cycles.

**Tissue specificity:**

Highest levels of expression in heart and skeletal muscle, with significant levels expressed in kidney and liver..

**Subcellular location:**

Nucleus. Chromosome, centromere, kinetochore.

**Function:**

Part of the MIS12 complex which is required for normal chromosome alignment and segregation and kinetochore formation during mitosis. May act as a cotranscription partner of NFE2L2 involved in regulation of polyamine-induced transcription of SSAT..

**Introduction:** **WB:** Western Blot **IP:** Immunoprecipitation **IHC:** Immunohistochemistry **ChIP:** Chromatin Immunoprecipitation **ICC/IF:** Immunocytochemistry/Immunofluorescence **F:** Flow Cytometry

**Cross Reactivity:** **H:** human **M:** mouse **R:** rat **Hm:** hamster **Mk:** monkey **Vir:** virus **Mi:** mink **C:** chicken **Dm** D. melanogaster **X:** Xenopus **Z:** zebrafish **B:** bovine **Dg:** dog **Pg:** pig **Hr:** horse

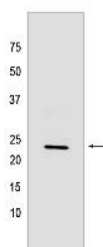
**For Research Use Only. Not For Use In Diagnostic Procedures.**

---

## Validation Data:

### PMF1 Rabbit mAb [K2GY] Images

---



Western blot(SDS-PAGE) analysis of extracts from MCF7 cells lysate.using PMF1 Rabbit mAb [K2GY] at dilution of 1:1000 incubated at 4°C over night.

View more information on <http://naturebios.com>

**IMPORTANT:** For western blots, incubate membrane with diluted primary antibody in 1% w/v Milk, 1X TBST at 4°C overnight.