

**Plakophilin 1 Rabbit mAb [8RP7]**

**Cat NO. :A16835**

**Information:**

| Applications | Reactivity: | UniProt ID: | MW(kDa) | Host   | Isotype | Size        |
|--------------|-------------|-------------|---------|--------|---------|-------------|
| WB,ICC/IF    | H,M         | Q13835      | 75 kDa  | Rabbit | IgG     | 100ul,200ul |

**Applications detail:**

| Application  | Dilution    |
|--|-------------|
| WB   | 1:1000-2000 |
| ICC/IF   | 1:100,      |
| The optimal dilutions should be determined by the end user |             |

**Conjugate:**

UnConjugate

**Form:**

Liquid

**sensitivity:**

Endogenous

**Purification:**

Protein A purification

**Specificity:**

Antibody is produced by immunizing animals with a synthetic peptide of Human Plakophilin 1.

**Storage buffer and conditions:**

Antibody store in 10 mM PBS, 0.5mg/ml BSA, 50% glycerol (buffer) .

Shipped at 4°C. Store at -20°C or -80°C.

Products are valid for one natural year of receipt.Avoid repeated freeze / thaw cycles.

**Tissue specificity:**

Isoform 2 is widely expressed. Isoform 1 is expressed in stratified squamous, complex, glandular duct and bladder epithelia.

**Subcellular location:**

[Isoform 1]: Nucleus. Cell junction, desmosome.,Nucleus.

**Function:**

**Introduction:** **WB:** Western Blot **IP:** Immunoprecipitation **IHC:** Immunohistochemistry **ChIP:** Chromatin Immunoprecipitation **ICC/IF:** Immunocytochemistry/Immunofluorescence **F:** Flow Cytometry

**Cross Reactivity:** **H:** human **M:** mouse **R:** rat **Hm:** hamster **Mk:** monkey **Vir:** virus **Ml:** mink **C:** chicken **Dm** D. melanogaster **X:** Xenopus **Z:** zebrafish **B:** bovine **Dg:** dog **Pg:** pig **Hr:** horse

**For Research Use Only. Not For Use In Diagnostic Procedures.**

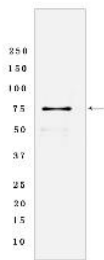
---

Seems to play a role in junctional plaques. Contributes to epidermal morphogenesis..

## Validation Data:

### Plakophilin 1 Rabbit mAb [8RP7] Images

---



Western blot (SDS PAGE) analysis of extracts from Mouse skin tissue lysate using Plakophilin 1 Rabbit mAb [8RP7] at dilution of 1:1000 incubated at 4°C over night

View more information on <http://naturebios.com>

**IMPORTANT:** For western blots, incubate membrane with diluted primary antibody in 1% w/v Milk, 1X TBST at 4°C overnight.

For Research Use Only. Not For Use In Diagnostic Procedures.