

SEC61A Rabbit mAb [81K8]

Cat NO. :A17379

Information:

| Applications | Reactivity: | UniProt ID: | MW(kDa) | Host | Isotype | Size |
|--------------|-------------|-------------|---------|--------|---------|-------------|
| WB,IHC | H | P61619 | 49 kda | Rabbit | IgG | 100ul,200ul |

Applications detail:

| Application | Dilution |
|--|-------------|
| WB | 1:1000-2000 |
| IHC | 1:100, |
| The optimal dilutions should be determined by the end user | |

Conjugate:

UnConjugate

Form:

Liquid

sensitivity:

Endogenous

Purification:

Protein A purification

Specificity:

Antibody is produced by immunizing animals with a synthetic peptide of Human SEC61A.

Storage buffer and conditions:

Antibody store in 10 mM PBS, 0.5mg/ml BSA, 50% glycerol (buffer) .

Shipped at 4°C. Store at -20°C or -80°C.

Products are valid for one natural year of receipt.Avoid repeated freeze / thaw cycles.

Tissue specificity:

Expressed in proximal and distal tubules in kidney (at protein level)..

Subcellular location:

Endoplasmic reticulum membrane,Multi-pass membrane protein.

Function:

Component of SEC61 channel-forming translocon complex that mediates transport of signal peptide-containing precursor polypeptides across the endoplasmic reticulum (ER) (PubMed:12475939, PubMed:22375059, PubMed:29719251, PubMed:32814900, PubMed:28782633). Forms a ribosome receptor and a gated pore in the ER membrane, both functions required for cotranslational translocation of nascent polypeptides (PubMed:22375059, PubMed:29719251, PubMed:28782633). May cooperate with auxiliary protein SEC62, SEC63 and HSPA5/BiP to enable post-translational transport of small presecretory proteins (PubMed:22375059, PubMed:29719251). Component of a ribosome-associated ER translocon complex involved in multi-pass

Introduction: **WB:** Western Blot **IP:** Immunoprecipitation **IHC:** Immunohistochemistry **ChIP:** Chromatin Immunoprecipitation **ICC/IF:** Immunocytochemistry/Immunofluorescence **F:** Flow Cytometry

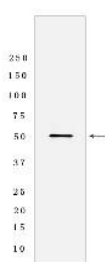
Cross Reactivity: **H:** human **M:** mouse **R:** rat **Hm:** hamster **Mk:** monkey **Vir:** virus **Ml:** mink **C:** chicken **Dm** D. melanogaster **X:** Xenopus **Z:** zebrafish **B:** bovine **Dg:** dog **Pg:** pig **Hr:** horse

For Research Use Only. Not For Use In Diagnostic Procedures.

membrane protein transport into the ER membrane and biogenesis (PubMed:32820719). The SEC61 channel cooperates with the translocating protein TRAM1 to import nascent proteins into the ER (PubMed:8616892). Controls the passive efflux of calcium ions from the ER lumen to the cytosol through SEC61 channel, contributing to the maintenance of cellular calcium homeostasis (PubMed:28782633). Plays a critical role in nephrogenesis, specifically at pronephros stage (By similarity)..

Validation Data:

SEC61A Rabbit mAb [81K8] Images



Western blot (SDS PAGE) analysis of extracts from Human fetal brain tissue lysate using SEC61A Rabbit mAb [81K8] at dilution of 1:1000 incubated at 4°C over

View more information on <http://naturebios.com>

IMPORTANT: For western blots, incubate membrane with diluted primary antibody in 1% w/v Milk, 1X TBST at 4°C overnight.