

**Claudin 17 Rabbit mAb [N81A]**

**Cat NO. :A24845**

**Information:**

Applications	Reactivity:	UniProt ID:	MW(kDa)	Host	Isotype	Size
WB	H,M,R	P56750	25 kda	Rabbit	IgG	100ul,200ul

**Applications detail:**

Application	Dilution
WB	1:1000-2000
The optimal dilutions should be determined by the end user	

**Conjugate:**

UnConjugate

**Form:**

Liquid

**sensitivity:**

Endogenous

**Purification:**

Protein A purification

**Specificity:**

Antibody is produced by immunizing animals with a synthetic peptide of Human Claudin 17.

**Storage buffer and conditions:**

Antibody store in 10 mM PBS, 0.5mg/ml BSA, 50% glycerol (buffer) .

Shipped at 4°C. Store at-20°C or -80°C.

Products are valid for one natural year of receipt.Avoid repeated freeze / thaw cycles.

**Tissue specificity:**

In the kidney, expressed in the proximal tubule and in the Henle's loop. In the distal convoluted tubule, not expressed in all tubules. Not detected in the collecting duct (at protein level)..

**Subcellular location:**

Cell junction, tight junction. Cell membrane,Multi-pass membrane protein.

**Function:**

**Introduction:** **WB:** Western Blot **IP:** Immunoprecipitation **IHC:** Immunohistochemistry **ChIP:** Chromatin Immunoprecipitation **ICC/IF:** Immunocytochemistry/Immunofluorescence **F:** Flow Cytometry

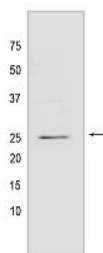
**Cross Reactivity:** **H:** human **M:** mouse **R:** rat **Hm:** hamster **Mk:** monkey **Vir:** virus **Ml:** mink **C:** chicken **Dm** D. melanogaster **X:** Xenopus **Z:** zebrafish **B:** bovine **Dg:** dog **Pg:** pig **Hr:** horse

**For Research Use Only. Not For Use In Diagnostic Procedures.**

Channel-forming tight junction protein with selectivity for anions, including chloride and bicarbonate, and for solutes smaller than 9 Angstrom in diameter. In the kidney proximal tubule, may be involved in quantitative reabsorption of filtered anions. Does not affect water permeability..

## Validation Data:

### Claudin 17 Rabbit mAb [N81A] Images



Western blot (SDS PAGE) analysis of extracts from Human muscle tissue lysate using Claudin 17 Rabbit mAb [N81A] at dilution of 1:1000 incubated at 4°C overnight

View more information on <http://naturebios.com>

**IMPORTANT:** For western blots, incubate membrane with diluted primary antibody in 1% w/v Milk, 1X TBST at 4°C overnight.