

Integrin linked ILK Rabbit mAb[HBQK]

Cat NO. :A40163

Information:

Applications	Reactivity:	UniProt ID:	MW(kDa)	Host	Isotype	Size
WB	H,M,R	Q13418	49kDa	Rabbit	IgG	50ul 100ul,200ul

Applications detail:

Application	Dilution
WB	1:1000-2000
The optimal dilutions should be determined by the end user	

Conjugate:

UnConjugate

Form:

Liquid

sensitivity:

Endogenous

Purification:

Protein A purification

Specificity:

Antibody is produced by immunizing animals with a synthetic peptide of human Integrin linked ILK.

Storage buffer and conditions:

Antibody store in 10 mM PBS, 0.5mg/ml BSA, 50% glycerol (buffer) .

Shipped at 4°C. Store at -20°C or -80°C.

Products are valid for one natural year of receipt.Avoid repeated freeze / thaw cycles.

Tissue specificity:

Highly expressed in heart followed by skeletal muscle, pancreas and kidney. Weakly expressed in placenta, lung and liver.

Subcellular location:

Cell junction, focal adhesion. Cell membrane,Peripheral membrane protein,Cytoplasmic side. Cell projection, lamellipodium. Cytoplasm, myofibril, sarcomere.

Function:

Introduction: **WB:** Western Blot **IP:** Immunoprecipitation **IHC:** Immunohistochemistry **ChIP:** Chromatin Immunoprecipitation **ICC/IF:** Immunocytochemistry/Immunofluorescence **F:** Flow Cytometry

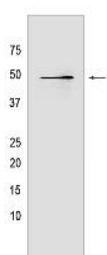
Cross Reactivity: **H:** human **M:** mouse **R:** rat **Hm:** hamster **Mk:** monkey **Vir:** virus **Mi:** mink **C:** chicken **Dm** D. melanogaster **X:** Xenopus **Z:** zebrafish **B:** bovine **Dg:** dog **Pg:** pig **Hr:** horse

For Research Use Only. Not For Use In Diagnostic Procedures.

Receptor-proximal protein kinase regulating integrin-mediated signal transduction (PubMed:8538749, PubMed:9736715). May act as a mediator of inside-out integrin signaling (PubMed:10712922). Focal adhesion protein part of the complex ILK-PINCH (PubMed:10712922). This complex is considered to be one of the convergence points of integrin- and growth factor-signaling pathway (PubMed:10712922). Could be implicated in mediating cell architecture, adhesion to integrin substrates and anchorage-dependent growth in epithelial cells (PubMed:10712922). Regulates cell motility by forming a complex with PARVB (PubMed:32528174). Phosphorylates beta-1 and beta-3 integrin subunit on serine and threonine residues, but also AKT1 and GSK3B (PubMed:8538749, PubMed:9736715)..

Validation Data:

Integrin linked ILK Rabbit mAb[HBQK] Images



Western blot (SDS PAGE) analysis of extracts from Rat kidney tissue lysate.Using Integrin linked ILK Rabbit mAb IgG [HBQK] at dilution of 1:1000 incubated at 4 °C over

View more information on <http://naturebios.com>

IMPORTANT: For western blots, incubate membrane with diluted primary antibody in 1% w/v Milk, 1X TBST at 4°C overnight.

For Research Use Only. Not For Use In Diagnostic Procedures.