

AZI2 Rabbit mAb [331S]

Cat NO. :A52044

Information:

Applications	Reactivity:	UniProt ID:	MW(kDa)	Host	Isotype	Size
WB,ICC/IF	H,M,R	Q9H6S1	45 kDa	Rabbit	IgG	100ul,200ul

Applications detail:

Application	Dilution
WB	1:1000-2000
ICC/IF	1:100,
The optimal dilutions should be determined by the end user	

Conjugate:

UnConjugate

Form:

Liquid

sensitivity:

Endogenous

Purification:

Protein A purification

Specificity:

Antibody is produced by immunizing animals with a synthetic peptide of Human AZI2.

Storage buffer and conditions:

Antibody store in 10 mM PBS, 0.5mg/ml BSA, 50% glycerol (buffer) .

Shipped at 4°C. Store at-20°C or -80°C.

Products are valid for one natural year of receipt.Avoid repeated freeze / thaw cycles.

Tissue specificity:

Widely expressed (PubMed:14560022). Abundant expression seen in the pancreas and testis (PubMed:14560022)..

Subcellular location:

Cytoplasm.

Function:

Introduction: **WB:** Western Blot **IP:** Immunoprecipitation **IHC:** Immunohistochemistry **ChIP:** Chromatin Immunoprecipitation **ICC/IF:** Immunocytochemistry/Immunofluorescence **F:** Flow Cytometry

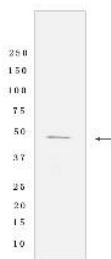
Cross Reactivity: **H:** human **M:** mouse **R:** rat **Hm:** hamster **Mk:** monkey **Vir:** virus **Ml:** mink **C:** chicken **Dm** D. melanogaster **X:** Xenopus **Z:** zebrafish **B:** bovine **Dg:** dog **Pg:** pig **Hr:** horse

For Research Use Only. Not For Use In Diagnostic Procedures.

Adapter protein which binds TBK1 and IKKε playing a role in antiviral innate immunity (PubMed:14560022, PubMed:21931631). Activates serine/threonine-protein kinase TBK1 and facilitates its oligomerization (PubMed:14560022, PubMed:21931631). Enhances the phosphorylation of NF-κB p65 subunit RELA by TBK1 (PubMed:14560022, PubMed:21931631). Promotes TBK1-induced as well as TNF-α or PMA-induced activation of NF-κB (PubMed:14560022, PubMed:21931631). Participates in IFNβ promoter activation via TICAM1 (PubMed:15611223)..

Validation Data:

AZI2 Rabbit mAb [331S] Images



Western blot (SDS PAGE) analysis of extracts from HeLa cells lysates using AZI2 Rabbit mAb [331S] at dilution of 1:1000 incubated at 4°C overnight

View more information on <http://naturebios.com>

IMPORTANT: For western blots, incubate membrane with diluted primary antibody in 1% w/v Milk, 1X TBST at 4°C overnight.