

## MCM3 Rabbit mAb [I4D6]

Cat NO. :A66076

### Information:

Applications	Reactivity:	UniProt ID:	MW(kDa)	Host	Isotype	Size
WB	H	P25205	100 kDa	Rabbit	IgG	100ul,200ul

### Applications detail:

Application	Dilution
WB	1:1000-2000
The optimal dilutions should be determined by the end user	

### Conjugate:

UnConjugate

### Form:

Liquid

### sensitivity:

Endogenous

### Purification:

Protein A purification

### Specificity:

Antibody is produced by immunizing animals with a synthetic peptide of Human MCM3.

### Storage buffer and conditions:

Antibody store in 10 mM PBS, 0.5mg/ml BSA, 50% glycerol (buffer) .

Shipped at 4°C. Store at -20°C or -80°C.

Products are valid for one natural year of receipt.Avoid repeated freeze / thaw cycles.

### Tissue specificity:

### Subcellular location:

Nucleus. Chromosome.

### Function:

Acts as component of the MCM2-7 complex (MCM complex) which is the putative replicative helicase essential for 'once per cell cycle' DNA replication initiation and elongation in eukaryotic cells. The active ATPase sites in the MCM2-7 ring are formed through the interaction surfaces of two neighboring subunits such that a critical structure of a conserved arginine finger motif is provided in trans relative to the ATP-binding site of the Walker A box of the adjacent subunit. The six ATPase active sites, however, are likely to contribute differentially to the complex helicase activity. Required for DNA replication and cell proliferation..

**Introduction:** **WB:** Western Blot **IP:** Immunoprecipitation **IHC:** Immunohistochemistry **ChIP:** Chromatin Immunoprecipitation **ICC/IF:** Immunocytochemistry/Immunofluorescence **F:** Flow Cytometry

**Cross Reactivity:** **H:** human **M:** mouse **R:** rat **Hm:** hamster **Mk:** monkey **Vir:** virus **Ml:** mink **C:** chicken **Dm:** D. melanogaster **X:** Xenopus **Z:** zebrafish **B:** bovine **Dg:** dog **Pg:** pig **Hr:** horse

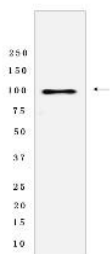
**For Research Use Only. Not For Use In Diagnostic Procedures.**

---

## Validation Data:

### MCM3 Rabbit mAb [I4D6] Images

---



Western blot (SDS PAGE) analysis of extracts from HeLa cells lysates using MCM3 Rabbit mAb [I4D6] at dilution of 1:1000 incubated at 4°C over night

View more information on <http://naturebios.com>

**IMPORTANT:** For western blots, incubate membrane with diluted primary antibody in 1% w/v Milk, 1X TBST at 4°C overnight.

For Research Use Only. Not For Use In Diagnostic Procedures.