

## 14-3-3 beta/Theta Rabbit mAb[IFKC]

Cat NO. :A69800

### Information:

Applications	Reactivity:	UniProt ID:	MW(kDa)	Host	Isotype	Size
WB	H,M,R	P31946/P63104	28kDa	Rabbit	IgG	50ul 100ul,200ul

### Applications detail:

Application	Dilution
WB	1:1000-2000
The optimal dilutions should be determined by the end user	

### Conjugate:

UnConjugate

### Form:

Liquid

### sensitivity:

Endogenous

### Purification:

Protein A purification

### Specificity:

Antibody is produced by immunizing animals with a synthetic peptide of human 14-3-3 beta/Theta.

### Storage buffer and conditions:

Antibody store in 10 mM PBS, 0.5mg/ml BSA, 50% glycerol (buffer) .

Shipped at 4°C. Store at -20°C or -80°C.

Products are valid for one natural year of receipt.Avoid repeated freeze / thaw cycles.

### Tissue specificity:

### Subcellular location:

Cytoplasm. Melanosome.

### Function:

Adapter protein implicated in the regulation of a large spectrum of both general and specialized signaling pathways. Binds to a large number of partners, usually by recognition of a phosphoserine or phosphothreonine motif. Binding generally results in the modulation of the activity of the binding partner. Negative regulator of osteogenesis. Blocks the nuclear translocation of the phosphorylated form (by AKT1) of SRPK2 and antagonizes its stimulatory effect on cyclin D1 expression resulting in blockage of neuronal apoptosis elicited by SRPK2. Negative regulator of signaling cascades that mediate activation of MAP kinases via AKAP13..

**Introduction:** **WB:** Western Blot **IP:** Immunoprecipitation **IHC:** Immunohistochemistry **ChIP:** Chromatin Immunoprecipitation **ICC/IF:** Immunocytochemistry/Immunofluorescence **F:** Flow Cytometry

**Cross Reactivity:** **H:** human **M:** mouse **R:** rat **Hm:** hamster **Mk:** monkey **Vir:** virus **Mi:** mink **C:** chicken **Dm:** D. melanogaster **X:** Xenopus **Z:** zebrafish **B:** bovine **Dg:** dog **Pg:** pig **Hr:** horse

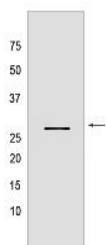
For Research Use Only. Not For Use In Diagnostic Procedures.

---

## Validation Data:

### 14-3-3 beta/Theta Rabbit mAb[IFKC] Images

---



Western blot (SDS PAGE) analysis of extracts from HT-29 cells.Using 14-3-3 beta/Theta Rabbit mAb IgG [IFKC] at dilution of 1:1000 incubated at 4℃ over night.

View more information on <http://naturebios.com>

**IMPORTANT:** For western blots, incubate membrane with diluted primary antibody in 1% w/v Milk, 1X TBST at 4°C overnight.

For Research Use Only. Not For Use In Diagnostic Procedures.