

## MGT4A Rabbit mAb [488L]

Cat NO. :A70833

### Information:

Applications	Reactivity:	UniProt ID:	MW(kDa)	Host	Isotype	Size
WB,IHC,ICC/IF	H,M,R	Q9UM21	62 kDa	Rabbit	IgG	100ul,200ul

### Applications detail:

Application	Dilution
WB	1:1000-2000
IHC	1:100
ICC/IF	1:100
The optimal dilutions should be determined by the end user	

### Conjugate:

UnConjugate

### Form:

Liquid

### sensitivity:

Endogenous

### Purification:

Protein A purification

### Specificity:

Antibody is produced by immunizing animals with a synthetic peptide at the sequence of human MGT4A

### Storage buffer and conditions:

Antibody store in 10 mM PBS, 0.5mg/ml BSA, 50% glycerol (buffer) .

Shipped at 4°C. Store at -20°C or -80°C.

Products are valid for one natural year of receipt.Avoid repeated freeze / thaw cycles.

### Tissue specificity:

Expressed in pancreas, spleen, thymus, prostate, small intestine, peripheral blood leukocytes and lymph node.

Strongly overexpressed in choriocarcinoma cancer cell lines. Down-regulated in pancreatic

### Subcellular location:

[Alpha-1,3-mannosyl-glycoprotein 4-beta-N-acetylglucosaminyltransferase A]: Golgi apparatus membrane,Single-pass type II membrane protein.,[Alpha-1,3-mannosyl-glycoprotein

### Function:

**Introduction:** **WB:** Western Blot **IP:** Immunoprecipitation **IHC:** Immunohistochemistry **ChIP:** Chromatin Immunoprecipitation **ICC/IF:** Immunocytochemistry/Immunofluorescence **F:** Flow Cytometry

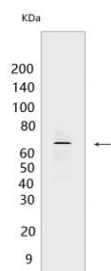
**Cross Reactivity:** **H:** human **M:** mouse **R:** rat **Hm:** hamster **Mk:** monkey **Vir:** virus **Mi:** mink **C:** chicken **Dm:** D. melanogaster **X:** Xenopus **Z:** zebrafish **B:** bovine **Dg:** dog **Pg:** pig **Hr:** horse

For Research Use Only. Not For Use In Diagnostic Procedures.

Glycosyltransferase that catalyze the transfer of GlcNAc from UDP-GlcNAc to the GlcNAc $\beta$ 1-2Man $\alpha$ 1-3 arm of the core structure of N-linked glycans through a  $\beta$ 1-4 linkage and participates in the production of tri- and tetra-antennary N-linked sugar chains (PubMed:17006639). Involved in glucose transport by mediating SLC2A2/GLUT2 glycosylation, thereby controlling cell-surface expression of SLC2A2 in pancreatic beta cells (By similarity)..

## Validation Data:

### MGT4A Rabbit mAb [488L] Images



Western blot (SDS PAGE) analysis of extracts from Human fetal heart. Using MGT4A Rabbit mAb [488L] at dilution of 1:1000 incubated at 4°C over night.

View more information on <http://naturebios.com>

**IMPORTANT:** For western blots, incubate membrane with diluted primary antibody in 1% w/v Milk, 1X TBST at 4°C overnight.

For Research Use Only. Not For Use In Diagnostic Procedures.