

## LRP6 Rabbit mAb [BWGD]

Cat NO. :A79220

## Information:

Applications	Reactivity:	UniProt ID:	MW(kDa)	Host	Isotype	Size
WB	H	O75581	18,36 kDa	Rabbit	IgG	100ul,200ul

## Applications detail:

Application	Dilution
WB	1:1000-2000
The optimal dilutions should be determined by the end user	

## Conjugate:

UnConjugate

## Form:

Liquid

## sensitivity:

Endogenous

## Purification:

Protein A purification

## Specificity:

Antibody is produced by immunizing animals with a synthetic peptide at the sequence of human LRP6

## Storage buffer and conditions:

Antibody store in 10 mM PBS, 0.5mg/ml BSA, 50% glycerol (buffer) .

Shipped at 4°C. Store at -20°C or -80°C.

Products are valid for one natural year of receipt.Avoid repeated freeze / thaw cycles.

## Tissue specificity:

Widely coexpressed with LRP5 during embryogenesis and in adult tissues.

## Subcellular location:

Cell membrane,Single-pass type I membrane protein. Endoplasmic reticulum. Membrane raft.

## Function:

Component of the Wnt-Fzd-LRP5-LRP6 complex that triggers beta-catenin signaling through inducing aggregation of receptor-ligand complexes into ribosome-sized signalsomes. Cell-surface coreceptor of Wnt/beta-catenin signaling, which plays a pivotal role in bone formation. The Wnt-induced Fzd/LRP6 coreceptor complex recruits DVL1 polymers to the plasma membrane which, in turn, recruits the AXIN1/GSK3B-complex to the cell surface promoting the formation of signalsomes and inhibiting AXIN1/GSK3-mediated phosphorylation and destruction of beta-catenin. Required for posterior patterning of the epiblast during gastrulation (By similarity)..

**Introduction:** **WB:** Western Blot **IP:** Immunoprecipitation **IHC:** Immunohistochemistry **ChIP:** Chromatin Immunoprecipitation **ICC/IF:** Immunocytochemistry/Immunofluorescence **F:** Flow Cytometry

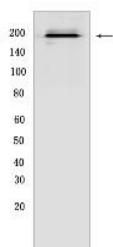
**Cross Reactivity:** **H:** human **M:** mouse **R:** rat **Hm:** hamster **Mk:** monkey **Vir:** virus **Ml:** mink **C:** chicken **Dm:** D. melanogaster **X:** Xenopus **Z:** zebrafish **B:** bovine **Dg:** dog **Pg:** pig **Hr:** horse

For Research Use Only. Not For Use In Diagnostic Procedures.

## Validation Data:

### LRP6 Rabbit mAb [BWGD] Images

---



Western blot (SDS PAGE) analysis of extracts from HEK-293T cells.Using LRP6Rabbit mAb [BWGD] at dilution of 1:1000 incubated at 4℃ over night.

View more information on <http://naturebios.com>

**IMPORTANT:** For western blots, incubate membrane with diluted primary antibody in 1% w/v Milk, 1X TBST at 4°C overnight.